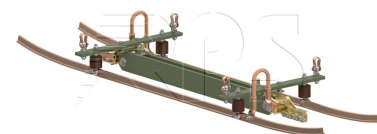


**Product** Section insulator 1,5 kV with passable GRP plates with skids  
- bridging type

**Manufacturer** Rail Power Systems GmbH

**Material number** 3EGF015682



© RPS Rail Power Systems

Spark plugs: no

Number of pantograph cycles: 2 million

Breaking force: 45 kN

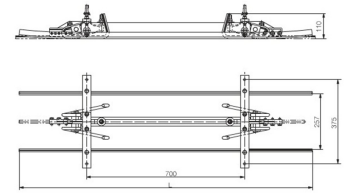
## Mechanical values

	Wert
Name	Section insulator 1,5 kV with passable GRP plates with skids - bridging type
Material	Plastic insulator
Weight	12,5 kg
Nominal Force	15 kN
Length	1500 mm
Contact Wire	AC 80 Cu bis AC 150 Cu
Number of contact wires	1
Maximum operating speed	100 km/h

## Electrical values

	Wert
Name	Section insualtor 1,5 kV with passable GRP plates with skids - bridging type
Creepage Path	680 mm
Power-frequency withstand voltage, wet	25 kV
Nominal voltage	1,5 kV
Rated impulse voltage	85 kV

**Product** Section insulator 1,5 kV with passable GRP plates with skids  
**Manufacturer** Rail Power Systems GmbH  
**Material number** 3EGF010289



© RPS | Rail Power Systems

Spark plugs: no

Number of pantograph cycles: 2 million

Breaking force: 45 kN

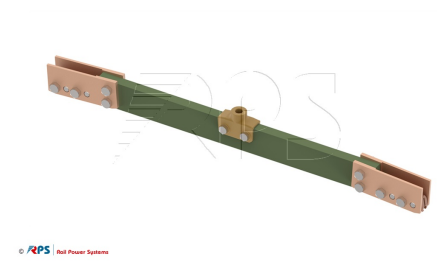
## Mechanical values

	Wert
Name	Section insulator 1,5 kV with passable GRP plates with skids
Material	Plastic insulator
Weight	16,5 kg
Length	1300 mm
Contact Wire	AC 80 -150
Number of contact wires	1
Maximum operating speed	100 km/h

## Electrical values

	Wert
Name	Section insulator 1,5 kV with passable GRP plates with skids
Creepage Path	500 mm
Power-frequency withstand voltage, wet	25 kV
Nominal voltage	1,5 kV
Rated impulse voltage	66 kV

**Product** Section insulator 1,5 kV with passable GRP plates without skids  
**Manufacturer** Rail Power Systems GmbH  
**Material number** 3EGF005855



© RPS | Rail Power Systems

Spark plugs: no  
 Number of pantograph cycles: 2 million  
 Breaking force: 45 kN

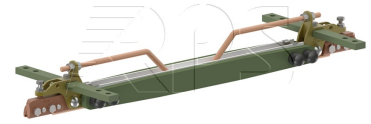
## Mechanical values

	Wert
Name	Section insulator 1,5 kV with passable GRP plates without skids
Material	Plastic insulator
Weight	4,8 kg
Nominal Force	15 kN
Length	800 mm
Contact Wire	AC 80 -150
Number of contact wires	1
Maximum operating speed	100 km/h

## Electrical values

	Wert
Name	Section insulator 1,5 kV with passable GRP plates without skids
Material	Plastic insulator
Power-frequency withstand voltage, wet	25 kV
Nominal voltage	1,5 kV
Rated impulse voltage	66 kV

**Product** Section insulator 1,5 kV with GRP plates and arcing horns  
**Manufacturer** Rail Power Systems GmbH  
**Material number** 3EGF008040



© RPS | Rail Power Systems

Arcing horn: yes  
Number of pantograph cycles: 2 million  
Breaking force: 45 kN

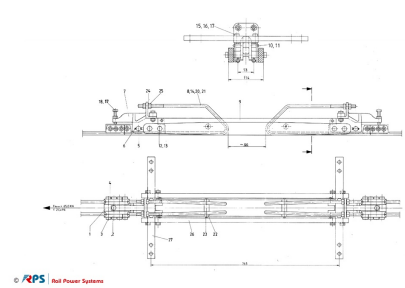
## Mechanical values

	Wert
Name	Section insulator 1,5 kV with GRP plates and arcing horns
Material	Plastic insulator
Weight	8,6 kg
Nominal Force	15 kN
Contact Wire	AC120 Cu
Number of contact wires	1
Maximum operating speed	100 km/h

## Electrical values

	Wert
Name	Section insulator 1,5 kV with GRP plates and arcing horns
Creepage Path	250 mm
Power-frequency withstand voltage, wet	25 kV
Nominal voltage	1,5 kV
Rated impulse voltage	66 kV

**Product** Section insulator 1,5 kV with GRP plates and arcing horns for 2 contact\_wires  
**Manufacturer** Rail Power Systems GmbH  
**Material number** 3EGF008412



Arcing horn: yes

Number of pantograph cycles: 2 million

Breaking force: 45 kN

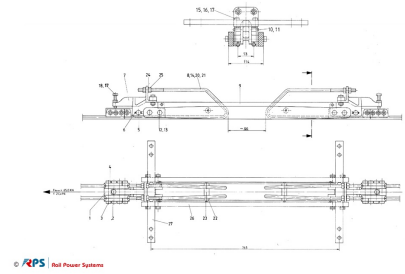
## Mechanical values

	Wert
Name	Section insulator 1,5 kV with GRP plates and arcing horns for 2 contact wires
Material	Plastic insulator
Weight	15,3 kg
Nominal Force	15 kN
Contact Wire	AC 80 -150
Number of contact wires	2
Maximum operating speed	100 km/h

## Electrical values

	Wert
Name	Section insulator 1,5 kV with GRP plates and arcing horns for 2 contact wires
Creepage Path	250 mm
Power-frequency withstand voltage, wet	25 kV
Nominal voltage	1,5 kV
Rated impulse voltage	66 kV

**Product** Section insulator 1,5 kV with passable GRP plates for 2 contact wires  
**Manufacturer** Rail Power Systems GmbH  
**Material number** 3EGF006013



Arcing horns: no

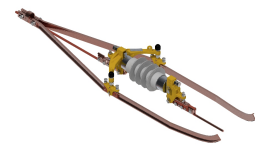
Number of pantograph cycles: 2 million

Breaking force: 45 kN

## Mechanical values

	Wert
Name	Section insulator 1,5 kV with passable GRP plates for 2 contact wires
Material	Plastic insulator
Weight	14,70 kg
Nominal Force	15 kN
Contact Wire	AC 80 -150
Number of contact wires	2
Maximum operating speed	100 km/h

**Product** Section insulator 3 kV with composite insulators  
**Manufacturer** Rail Power Systems GmbH  
**Material number** 3EGF021387



Spark plugs: no

Number of pantograph cycles: 2 million

Breaking force: 88 kN

## Mechanical values

	Wert
Name	Section insulator 3 kV with composite insulators
Material	Plastic insulator
Weight	22 kg
Nominal Force	30 kN
Contact Wire	AC 80 -150
Maximum operating speed	160 km/h
Length	1595 mm
Number of contact wires	1

## Electrical values

	Wert
Name	Section insulator 3 kV with composite insulators
Nominal voltage	3 kV
Creepage Path	444 mm
Rated impulse voltage	30 kV
Power-frequency withstand voltage, wet	14 kV



**Product** Section insulator 3 kV with composite insulators for 2 contact wires  
**Manufacturer** Rail Power Systems GmbH  
**Material number** 3EGF021386



Funkenhörner: nein  
Anzahl Pantographendurchgänge: 2 Mio.  
Bruchkraft: 88 kN

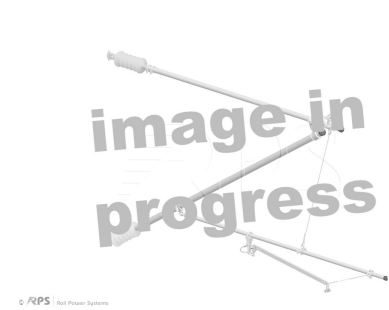
## Mechanical values

	Wert
Name	Section insulator 3 kV with composite insulators for 2 contact wires
Material	Plastic insulator
Weight	27 kg
Nominal Force	30 kN
Contact Wire	AC 80 -150
Maximum operating speed	160 km/h
Length	1840 mm
Number of contact wires	2

## Electrical values

	Wert
Name	Section insulator 3 kV with composite insulators for 2 contact wires
Nominal voltage	3 kV
Creepage Path	444 mm
Rated impulse voltage	30 kV
Power-frequency withstand voltage, wet	14 kV

**Product** Section insulator 3 kV with composite insulators and arcing horns  
**Manufacturer** Rail Power Systems GmbH  
**Material number** 3EGF021867



Spark plugs: yes  
 Number of pantograph cycles: 2 million  
 Breaking force: 88 kN

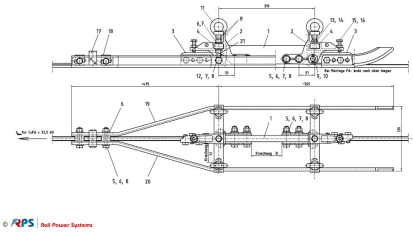
## Mechanical values

	Wert
Name	Section insulator 3 kV with composite insulators and arcing horns
Material	Plastic insulator
Weight	26 kg
Nominal Force	30 kN
Contact Wire	AC 80 -150
Maximum operating speed	160 km/h km/h
Length	1597 mm
Number of contact wires	1

## Electrical values

	Wert
Name	Section insulator 3 kV with composite insulators and arcing horns
Nominal voltage	1,5 kV
Creepage Path	250 mm
Rated impulse voltage	30 kV
Power-frequency withstand voltage, wet	14 kV

**Product** Section insulator 3 kV with GRP plates  
**Manufacturer** Rail Power Systems GmbH  
**Material number** 3EGF011680



Spark plugs: no  
 Number of pantograph cycles: 2 million  
 Breaking force: 45 kN

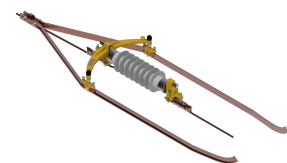
## Mechanical values

	Wert
Name	Section insulator 3 kV with GRP plates
Material	Plastic insulator
Weight	14 kg
Nominal Force	15 kN
Contact Wire	AC 80 - 120
Maximum operating speed	100 km/h
Number of contact wires	1

## Electrical values

	Wert
Name	Section insulator 3 kV with GRP plates
Nominal voltage	3 kV

**Product** Section insulators with composite insulator  
**Manufacturer** Rail Power Systems GmbH  
**Material number** 3EGF020747



Spark plugs: no

Number of pantograph cycles: 2 million

Breaking force: 88 kN

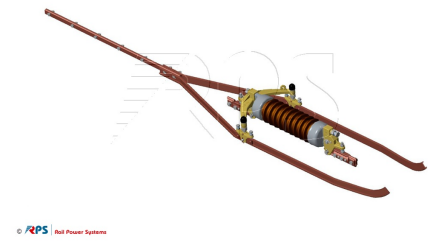
## Mechanical values

	Wert
Name	Section insulators with composite insulator
Material	Plastic insulator
Weight	26,5 kg
Nominal Force	30 kN
Contact Wire	AC 80 -150
Maximum operating speed	160 km/h
Length	2012 mm
Number of contact wires	1

## Electrical values

	Wert
Name	Section insulators with composite insulator
Nominal voltage	15 kV
Rated impulse voltage	140 kV
Power-frequency withstand voltage, wet	70 kV
Creepage Path	842 mm

**Product** Section insulator 15 kV with ceramic insulators  
**Manufacturer** Rail Power Systems GmbH  
**Material number** 3EGF007890



Spark plugs: no  
 Number of pantograph cycles: 2 million  
 Breaking force: 88 kN

## Mechanical values

	Wert
Name	Section insulator 15 kV with ceramic insulators
Material	Ceramic insulator
Weight	28,5 kg
Nominal Force	30 kN
Contact Wire	AC 80 -150
Maximum operating speed	120 km/h
Length	1600 mm
Number of contact wires	1

## Electrical values

	Wert
Name	Section insulator 15 kV with ceramic insulators
Nominal voltage	15 kV
Rated impulse voltage	93 kV
Power-frequency withstand voltage, wet	47 kV
Creepage Path	555 mm

**Product** Section insulator 15 kV with ceramic insulators short  
**Manufacturer** Rail Power Systems GmbH  
**Material number** 3EGF001831



Spark plugs: no

Number of pantograph cycles: 2 million

Breaking force: 88 kN

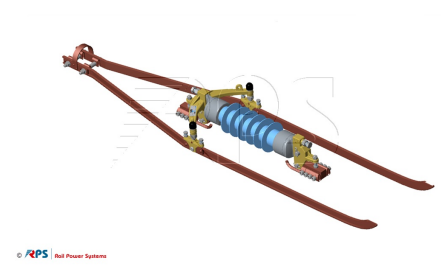
## Mechanical values

	Wert
Name	Section insulator 15 kV with ceramic insulators short
Material	Ceramic insulator
Weight	26,4 kg
Nominal Force	30 kN
Contact Wire	AC 80 -150
Maximum operating speed	160 km/h
Length	1600 mm
Number of contact wires	1

## Electrical values

	Wert
Name	Section insulator 15 kV with ceramic insulators short
Nominal voltage	15 kV
Rated impulse voltage	93 kV
Power-frequency withstand voltage, wet	47 kV

**Product** Section insulator 15 kV with composite insulators for 2 contact wires  
**Manufacturer** Rail Power Systems GmbH  
**Material number** 3EGF010628



Spark plugs: no  
 Number of pantograph cycles: 2 million  
 Breaking force: 88 kN

## Mechanical values

	Wert
Name	Section insulator 15 kV with composite insulators for 2 contact wires
Material	Plastic insulator
Weight	29,1 kg
Nominal Force	30 kN
Contact Wire	AC 80 -150
Maximum operating speed	160 km/h
Length	1600 mm
Number of contact wires	2

## Electrical values

	Wert
Name	Section insulator 15 kV with composite insulators for 2 contact wires
Nominal voltage	15 kV
Rated impulse voltage	93 kV
Power-frequency withstand voltage, wet	47 kV
Creepage Path	555 mm

**Product** Section insulator 15 kV with composite insulator  
**Manufacturer** Rail Power Systems GmbH  
**Material number** 3EGF001880



Spark plugs: no  
Number of pantograph cycles: 2 million  
Breaking force: 88 kN

## Mechanical values

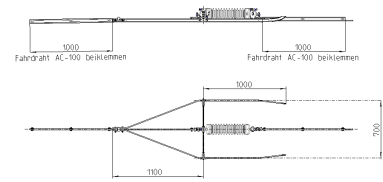
	Wert
Name	Section insulator 15 kV with composite insulator
Material	Plastic insulator
Weight	26,5 kg
Nominal Force	30 kN
Contact Wire	AC 80 -150
Maximum operating speed	160 km/h
Length	1600 mm
Number of contact wires	1

## Electrical values

	Wert
Name	Section insulator 15 kV with composite insulator
Nominal voltage	15 kV
Rated impulse voltage	93 kV
Power-frequency withstand voltage, wet	47 kV
Creepage Path	615 mm



**Product** Section insualtor 25 kV with ceramic insulators  
**Manufacturer** Rail Power Systems GmbH  
**Material number** 3EGF007542



Spark plugs: nein

Number of pantograph cycles: 2 million

Breaking force: 88 kN

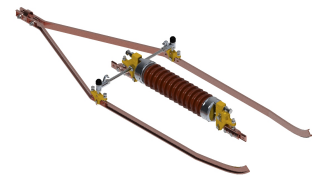
## Mechanical values

	Wert
Name	Section insualtor 25 kV with ceramic insulators
Material	Ceramic insulator
Weight	38,5 kg
Nominal Force	30 kN
Contact Wire	AC 80 -150
Number of contact wires	1
Maximum operating speed	160 km/h

## Electrical values

	Wert
Name	Section insualtor 25 kV with ceramic insulators
Nominal voltage	25 kV
Creepage Path	725 mm
Power-frequency withstand voltage, wet	130 kV
Rated impulse voltage	260 kV

**Product** Section insulator 25 kV with ceramic insulators with suspension  
**Manufacturer** Rail Power Systems GmbH  
**Material number** 3EGF007541



Spark plugs: nein

Number of pantograph cycles: 2 million

Breaking force: 88 kN

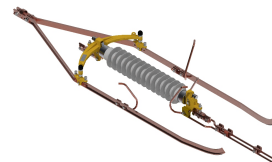
## Mechanical values

	Wert
Name	Section insulator 25 kV with ceramic insulators with suspension
Material	Ceramic insulator
Weight	32 kg
Nominal Force	30 kN
Contact Wire	AC 80 -150
Number of contact wires	1
Maximum operating speed	160 km/h

## Electrical values

	Wert
Name	Section insulator 25 kV with ceramic insulators with suspension
Nominal voltage	25 kV
Creepage Path	725 mm
Power-frequency withstand voltage, wet	130 kV
Rated impulse voltage	160 kV

**Product** Section insulator 25 kV with composite insulator with arcing horns  
**Manufacturer** Rail Power Systems GmbH  
**Material number** 3EGF021651



Spark plugs: yes

Number of pantograph cycles: 2 million

Breaking force: 88 kN

## Mechanical values

	Wert
Name	Section insulator 25 kV with composite insulator with arcing horns
Material	Plastic insulator
Weight	31,6 kg
Nominal Force	30 kN
Contact Wire	AC 80 -150
Number of contact wires	1
Maximum operating speed	160 km/h

## Electrical values

	Wert
Name	Section insulator 25 kV with composite insulator with arcing horns
Nominal voltage	25 kV
Creepage Path	1450 mm
Power-frequency withstand voltage, wet	80 kV
Rated impulse voltage	150 kV

**Product** Section insulator 25 kV with composite insulator  
**Manufacturer** Rail Power Systems GmbH  
**Material number** 3EGF020748



Spark plugs: no

Number of pantograph cycles: 2 million

Breaking force: 88 kN

## Mechanical values

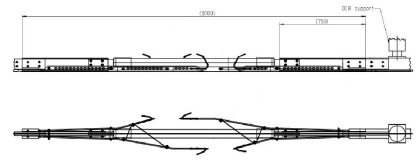
	Wert
Name	Section insulator 25 kV with composite insulator
Material	Plastic insulator
Weight	37 kg
Nominal Force	30 kN
Contact Wire	AC 80 -150
Number of contact wires	1
Maximum operating speed	160 km/h

## Electrical values

	Wert
Name	Section insulator 25 kV with composite insulator
Nominal voltage	25 kV
Creepage Path	1450 mm
Power-frequency withstand voltage, wet	80 kV
Rated impulse voltage	150 kV

**Product**  
**Manufacturer**  
**Material number**

Section insulator OCR 25 kV  
Rail Power Systems GmbH  
3EGF020701



© RPS | Rail Power Systems

## Mechanical values

	Wert
Name	Section insulator OSS 25 kV
Weight	41,9 kg

## Electrical values

	Wert
Name	Section insulator OSS 25 kV
Nominal voltage	25 kV
Creepage Path	1100 mm